

Nut Tapper UNT
Type NUTAP

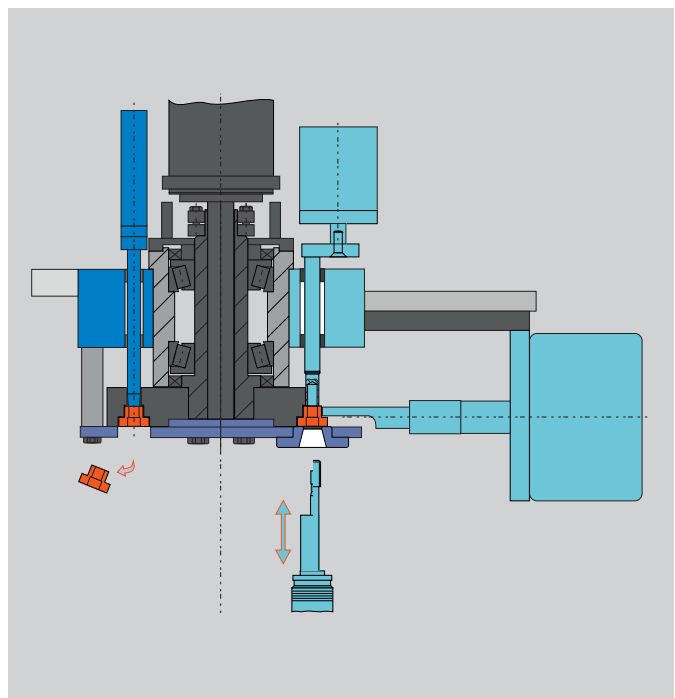
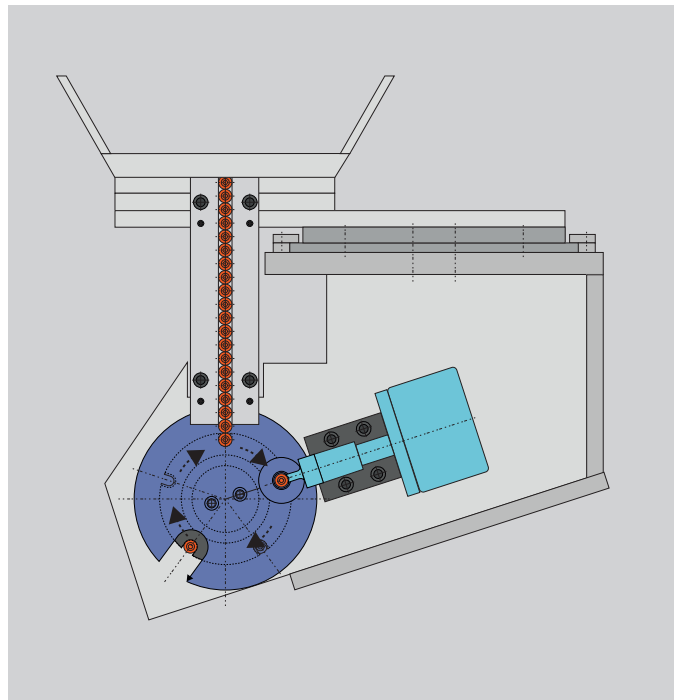


UNT

UNT machines are electronically controlled single-spindle reversing machines. They are especially designed for threading blind holes or extremely long parts. The standard rotary hopper guarantees the orientated feeding of blanks, vibratory feeder bowls are used when necessary.

- Simple handling and quick set-up
- Ease of use through stored memory adjustments (recallable data)
- Option: Suction device
- Option: Machining of top-ends, shaft-ends and radial grooves.

▼ Working principle



Nut Tapper UNT Type NUTAP

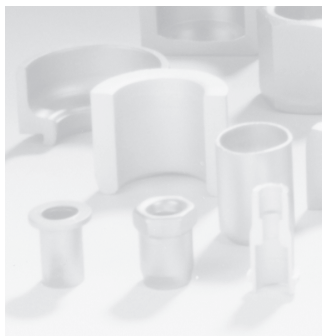


Technical Data		UNT 12	UNT 20
Size range metric		M3 – M12	M8 – M20
Size range inch		1/8" – 1/2"	5/16" – 3/4"
Max. outside diameter	mm	35	50
Max. length of parts	mm	150	150
Max. machining depth	mm	70	70
Max. spindle traverse	mm	140	140
Power of spindle motor	kW	6.9	6.9
Output (standard hex. nut)	max. pcs/min*	60	55
Coolant tank capacity	l	200	200
Machine weight	approx. kg	2000	2300

*) The output depends on material and product.



Hilgeland
Kieserling
MRP
Nutap



WAFIOS
Umformtechnik GmbH

Precision Parts
Forming Machinery

Made in Germany

Im Rehsiepen 35, 42369 Wuppertal
Phone +49 (202) 46 68-0
Fax +49 (202) 46 68-225

sales@wafios-umformtechnik.de
www.wafios-umformtechnik.com
Germany

The specifications are not binding as
these could vary on account of technical
developments.

03.2014